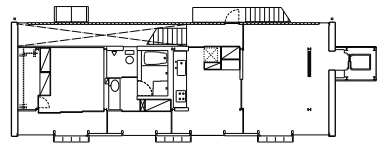


9 9 S-HOUSE

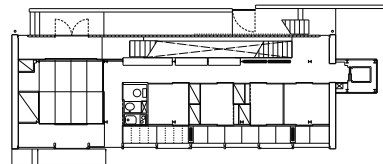
0 4 matsudo

The house, on a relatively large site in a suburb of Tokyo, is intended for a couple, a grandmother, two children and a sister and her husband who are living abroad. There are three levels. A space for the couple is on the top floor, minimum-sized compartments for other members of the family are on the middle floor, and a storage space and a library for the entire family are on the bottom floor. The spaces, like Engawa, on the north and south sides serve as buffer zones between the inside and the outside.

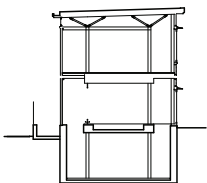
location: Matsudo, Chiba
 use: residence
 structure: steel frame + reinforced concrete,
 1 basement and 2 stories
 site area: 299.55m²
 building area: 131.21m²
 total floor area: 204.10m²
 completion date: 1999/04
 structural engineer: Plus.One Structural Dee.&
 Eng.Firm
 mechanical engineer: Kawaguchi Engineering
 Consultant
 award: 6th Space Design Competition, fine work



Second Floor



First Floor



Basement

