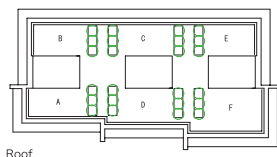


0 8 **Glasfall**

0 1 setagaya, Tokyo

This is a cooperative house comprising six units, built in a residential district slightly outside the city center. The adjoining land to the south and east is one story higher than the site. With the stairs placed in the center as structural cores that bear lateral loads and walls that take only vertical loads, the outer perimeter is clad entirely in glass to create an open spatial arrangement. Through these large openings, soft light and wind may be sensed in the gaps between the building and the adjoining land. The straight stairs cut across adjacent units like double helices. The stair cores are also effective as temperature control devices using gravity ventilation. Each unit is entered from the long and narrow rooftop first floor, and ascending to the rooftop each room on the second and third floor has a different quality depending on whether it faces south or north.

location: Setagaya-ku, Tokyo
 use: apartment
 structure: reinforced concrete, 3 stories
 site area: 319.36㎡
 building area: 150.73㎡
 total floor area: 470.19㎡
 completion date: 2008/01
 operator: Akira Emukai/airlab
 producer: Archinet
 structural engineer: Plus. One Structural Dee. & Eng. Firm
 mechanical engineer: DAN Consultants
 landscape gardener: SOY PLAN



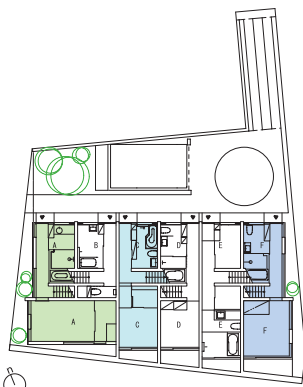
Roof



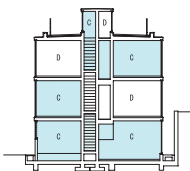
Third Floor



Second Floor



Site, First Floor



Section

